



Wright Soil & Water Conservation District

311 Brighton Avenue S., Suite C
Buffalo, MN 55313

Tel. (763) 682-1933 Ext. 3
(763) 682-1970
Fax. (763) 682-0262
www.wrightswcd.org

2021 TREE PICK-UP – DRIVE-THRU ONLY

LOCATION - WRIGHT COUNTY PUBLIC WORKS – Shed A - 3500 Braddock Ave. NE, Buffalo, MN

The Tree Barn is at the Wright County Public Works Facility. The shed is brown with white stripes and a white roof (see map). Look for Tree Sale signs. It is just north of the main Wright County Public Works building that now houses the Parks Dept., Surveyors Dept. and Extension Service.

SCHEDULE

- District staff will sort and package orders by order number, before pick-up, Monday - Wednesday.
- Please pick-up your trees during one of the designated times. Staff are only at the tree barn then.
- If you absolutely cannot make these times, contact Eric at the District to schedule an alternative pick-up.
- District staff work hard to provide trees in the best possible condition. Timely delivery depends on you.
- Plant your trees ASAP. After planting, we urge you to water, weed, and protect your trees from critters.

PAYMENT

- Bring the enclosed card when you come to pick-up.
- **PAYMENT IS DUE AT TIME OF PICK-UP.**
Checks are best, cash accepted but no change will be issued, NO CREDIT CARDS at pick-up.
- No receipts will be issued unless specifically requested ahead.
- If you purchase additional trees, it will be a separate order with separate payment.

PROCEDURE

- Please come during a designated pick-up time. Have a check made out to **Wright SWCD** ready.
- **Have your vehicle prepared for staff to load trees.**
- Use the included map as a guide for pick-up procedures.
 1. Follow signs/cones to rear of building, show your order number card to staff. Here you will receive a copy of your original order form, with a TOTAL DUE. Write your check.
 2. Continue around the building to the front, park in a designated spot in front of garage door.
 3. Staff will collect your payment and load your trees.

PACKAGING

- Trees roots are dipped in absorbent gel to prevent from drying out. Trees are packed in sawdust and labeled for pick-up. Once packed, they will not be watered.
- Tree packages may drip in your vehicle so, bring a tarp.
- After pick-up, trees are your responsibility. Refer to the **Tree Care Guide** below. Proper care the first couple years will certainly increase your tree survival rate.
- Trees keep fairly well up to a week, if kept cool, dark and sprinkled (not soaked) with water every couple days. **DO NOT STAND THEM IN WATER, THEY WILL ROT.** In warm weather, it doesn't take long before trees "heat" and die. **Keep trees cool, moist and out of direct sun and wind.**

EXTRA TREE SALE

- Remaining trees will be for sale at pick-up times on Thursday and Friday evening and Saturday morning. Please let your friends, relatives, neighbors and co-workers know. They are the same price.
- There are approximately 1,500 unsold trees. They will be sold “first come, first served” until they are gone.
- If species you want are not available, let us know, trees not picked up will be sold.
- Remaining inventory will be updated on our website and Facebook page. A large white board will be posted at the tree barn as well.
- White Oak, Pin Oak and American Hazelnut currently have ample supply, with limited supply of other species.

NOTES

- The District has (4) nursery providers, (1) in Minnesota, (2) in Michigan (1) in North Dakota
- **Most species are sold out, including:**
 - Red Mulberry - order 125 should receive the last bundle, February 15th
 - Pussy Willow - order 212 should receive the last bundle, February 22nd
 - Pagoda Dogwood - order 215 should receive the last bundle, February 24th
 - ‘Prairie Red’ Plum - order 218 should receive the last bundle, February 24th
 - Northern Catalpa - order 218 should receive the last bundle, February 24th
- Sorry, if you tried to order any of the trees and we were out. There’s always next year, order early to assure availability. Ordering information will be available in February.
- Evergreens (14,600) continue to be the most popular species, followed by sugar maples (3,100), oaks (2,500), lilac (2,000).
- The District had 7 planting bars, now we have 5. If you are lucky enough to **borrow** one, please return it to the District as soon as possible for others to use. Directions: sign it out, use it with care, clean it, **return it** to SWCD office. We are missing a couple from last year, if you have one, please return it.
- **Tell everyone about the Extra Trees Sale.** We probably will have trees left on Monday, call 763-682-1970. The price is the same (unless you want a large quantity). Thanks for spreading the word!
- Do you have tree species you would like to see on the list next year? Let us know!

Eric Mattson

Wright SWCD Conservation Technician

Tree Care Guide

- Plant your trees ASAP. After planting, water, weed, and protect your trees from critters.
- Keep packaged trees away from direct sunlight, heat and wind. Keep the package cool (35-50°F), moist and dark. Sprinkle with water every few days if not planted immediately.
- Do not store more than 5 days. If planting will not happen within 5 days, remove the trees from package and “heel” them in a trench, covering the roots with soil. Keep the soil moist. A shady area is best.
- When planting, carry the trees in a pail with a few inches of water. Do not stand trees in water over 2 hours.
- Create a hole as deep and wide as the tree root system. Breakup soil clods. You need only go as deep as the roots since most roots will grow outward.
- If roots are too long or broken, cut them off. You do not want roots folded in the bottom of the hole.
- The root collar of the tree should be at ground level when planted. Spread out roots so they do not encircle and girdle the tree as it grows.
- If amending the soil, use at least half native soil so that roots are not discouraged from growing outward.
- Press the soil with your hands firmly around the roots to avoid air pockets. This can greatly affect survival.
- Put wood/bark mulch around trees to help hold moisture and reduce weeds. Keep mulch 3 inches away from the trunk to prevent disease.
- Water trees thoroughly after planting. Watering trees weekly in dry weather will help survival.

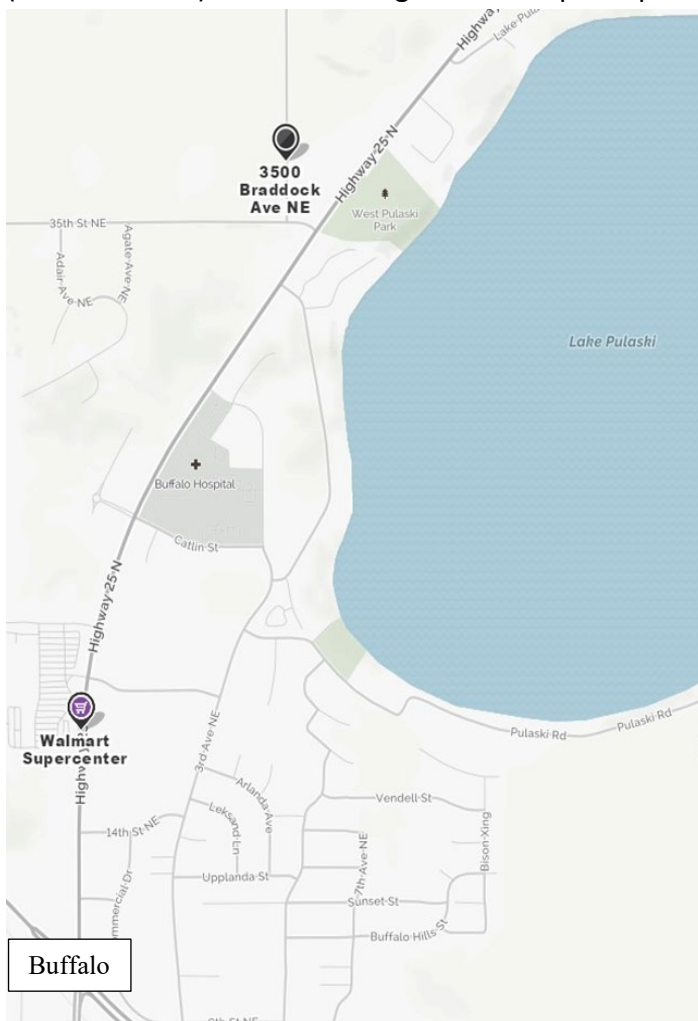
PICK-UP TIMES

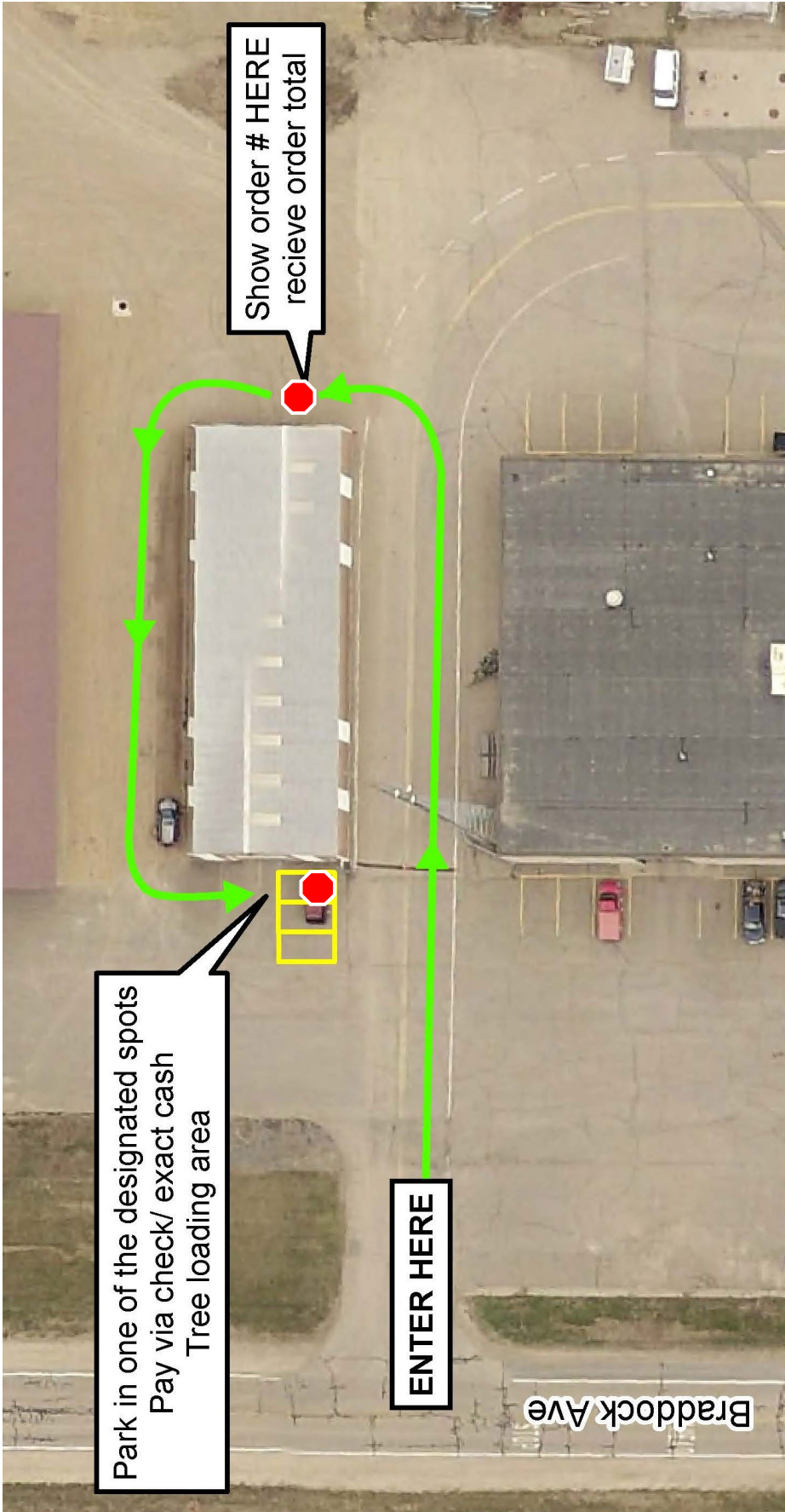
Wednesday	April 21	3:00 PM - 7:00 PM
Thursday	April 22	2:00 PM - 7:00 PM
Friday	April 23	2:00 PM - 7:00 PM
Saturday	April 24	9:00 AM - NOON

Pick the time best for you

Extra Tree Sales until gone!

YOU are expected to pick up and pay for your trees during one of these times. We may only be at the Tree Barn during delivery hours. If all times are **absolutely impossible**, contact the District Office (763-682-1970) ASAP to arrange alternate pick-up.





Braddock Ave

ENTER HERE

Park in one of the designated spots
Pay via check/ exact cash
Tree loading area

Show order # HERE
recieve order total